

As Orange County's largest employer, Disneyland Resort is home to 36,000 cast members who work in hundreds of different roles. We are committed to continued investment in our cast members and making meaningful differences in their lives with competitive employment packages and a wide array of benefits.

WORKING AT DISNEYLAND RESORT



PAY

At Disneyland Resort, we have starting rates that range from \$21.13 to \$25.00, with many skilled roles exceeding a starting rate of \$26.00 an hour. Nearly 96% of cast members earn above \$22 an hour.



BENEFITS

Disney offers competitive healthcare, dental and vision coverage for eligible cast members and their families beginning on the first day of employment. Individual healthcare plans start as low as \$8 per week in California.



LIFE

A dedicated on-site Cast Care Center helps in navigating 20+ resources available, including the Employee Assistance Program (EAP), legal support, tax services, commuter assistance, and connecting with quality child and senior care, pet care and homework help. Cast members can also visit on-site Partners Federal Credit Union branches and an on-site pharmacy with low prices on a variety of over-the-counter medications and products.



COMMUNITY

Disney is proud to support a large network of Belonging Employee Resource Groups (BERGs), our voluntary, employee-led groups formed around shared identity, interests and pursuits.

Disney VoluntEARS offers cast members countless ways to make meaningful impacts in their communities, including matching gifts programs.



ONLY AT DISNEY

Disney provides cast members and their families complimentary access to Disney parks and discounts on Disney experiences and products, so they can make their own memories. Cast members have shared that they appreciate being able to share Disney magic with their friends and family.

Cast members also have access to one-of-a-kind events, previews of new entertainment and attractions and other unique opportunities like after-hours celebrations in the parks.



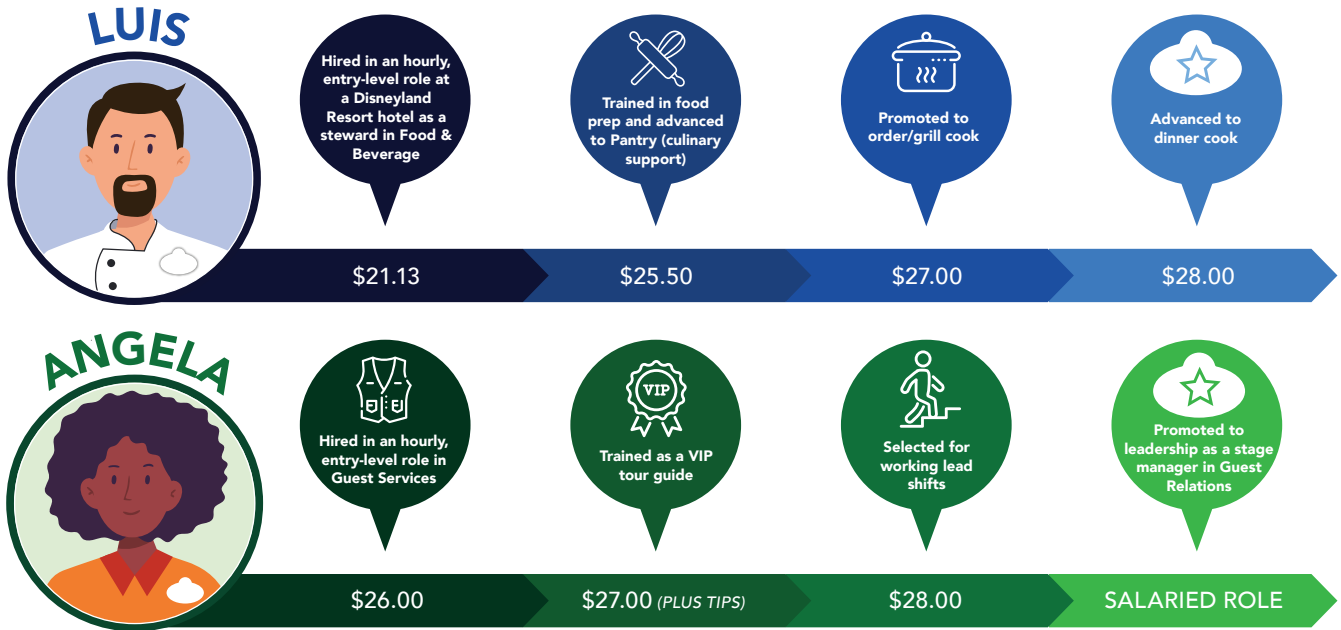
ADVANCEMENT

Through opportunities that offer hands-on experience, certificate courses for developing technical skills, mentorship programs like Thrive@Disney and other development programs, there are many ways for our cast members to expand their skill sets and take the next step in their careers. Did you know? In the past year, roughly 600 hourly cast members transitioned into different lines of business, reflecting sustained demand for growth, development, and cross-functional opportunities.

Approximately 10% of Disneyland Resort cast members are currently enrolled in Disney Aspire, the company's education investment and career development program, offering tuition paid up front for full- and part-time hourly employees with 180 days of service including local institutions such as California State University, Fullerton, and Fullerton College. Disney Aspire offers programs ranging from high school completion to undergraduate degrees.

ENDLESS POTENTIAL

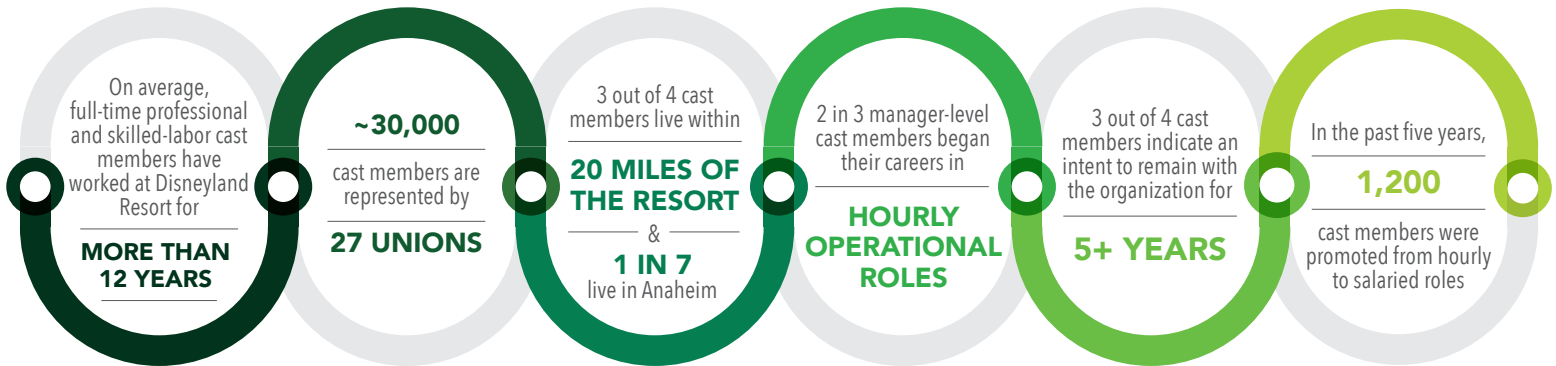
With many opportunities for growth and development, here are two examples of career progression at Disneyland Resort.



OTHER STARTING RATES

ENTERTAINMENT	HOTEL GUEST SERVICES	ELECTRICIAN	HOUSEKEEPING	SECURITY
\$25.20	\$29.75	\$40.02	\$25.50	\$26.00

DID YOU KNOW?



Top 3 Reasons People Apply for a Job at Disneyland Resort



Career Advancement



Company Reputation



Company Values Employees